

AAP



ORIENTATION GUIDE VOLUNTEERING AT AAP

**Information about volunteering on the various animal
care departments at AAP Animal Advocacy and
Protection**

Caroline Borst & Tamara Arts
Version September 2016

AAP



WELCOME



CONTENTS

1. Introduction	4
2. Background information	4
3. Organization	5
4. Departments and Volunteering	5
4.1. Animal Care - AAP Almere	5
4.1.1. Activities	6
4.1.2. Availability	6
4.2. Animal Care - AAP Primadomus	6
4.2.1. Activities	6
4.2.2. Availability	6
5. Additional information and application	7
5.1 Volunteering on other departments	7
5.2 EVS – European Voluntary Service	7
5.3 Accommodation and travel expenses	7
5.4 Public transportation	7
5.5 Application	7
6. Contact	8

1. INTRODUCTION

We are delighted that you are interested in volunteering at AAP Animal Advocacy and Protection. Since there is a great demand for voluntary work at AAP, this 'orientation guide for volunteering at AAP' has been drawn up. You'll find information concerning possible voluntary positions and extra attention is paid to the requirements necessary. We provide this information in the belief that you, as a potential volunteer, can make a well-considered choice, at an early stage, as to where in AAP your qualities can be put to the best of use. A good match of personal preferences and the requirements of the organisation is, in our view, a guarantee of work satisfaction and long term cooperation. AAP's personnel consists of about 300 people; 100 employees and about 200 volunteers and interns. It is safe to say that volunteers are essential and in our organization. For this reason, we do not charge our volunteers a participation fee. In fact, we offer our volunteers a free organic lunch on working days and the possibility to join AAP related activities.

2. BACKGROUND INFORMATION

AAP operates throughout Europe and is specialized in the rescue and rehabilitation of exotic animals. Not only do we rescue primates, but also other exotic mammals like big cats, racoons, skunks, degu's and prairie dogs. Animals that are rescued by AAP come from private owners, the illegal trade, animal laboratories, circuses or disreputable zoos. Aside from the rescue of animals, preventing the keeping of exotic animals as pets or entertainment is a crucial part of our work. At AAP we work incessantly for better national and international legislation, regulations and enforcement for animal welfare. We also provide information to the public at large. We believe that knowledge helps prevent the suffering of animals. That is why we combine forces and share our knowledge with other organisations that strive for better animal welfare.

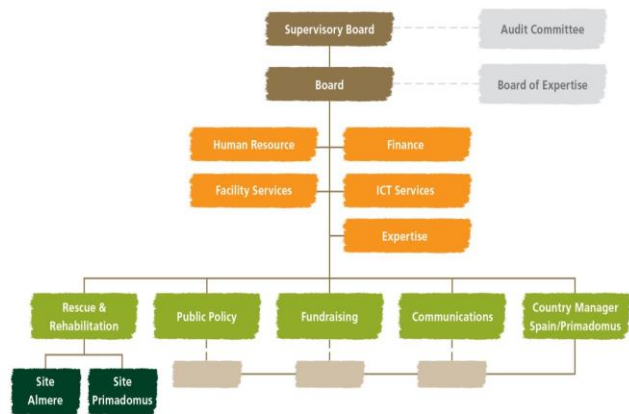
The culture of AAP distinguishes itself with passion for it's cause and a strong team spirit. Our core values serve as a guide and inspiration. The three core values with which we work are:

- *Dedication:* We have a healthy passion for animal welfare and combine this with the passion for each person's profession; from animal carer to director. Also, our teamwork allows others to depend on us and rely on our commitment.
- *Approach:* We are open and approachable. We like transparency and view the world with open eyes.
- *Invention:* Through years of experience we have the ability to translate our knowledge and understanding, in smart and creative ways and into innovative working methods and solutions.

AAP is an inspiring environment in which you can help. Besides activities it is possible to attend seminars and presentations. There are also events in which you can either cooperate or create a network and meet new people, and in that way help to achieve the goals of AAP.

3. ORGANIZATION

The adjoining illustration shows the organization chart of AAP. At the head of the organization is the Supervisory Board, which directs the organization from a distance. Directly below the Supervisory Board is the managing director who, together with the manager operations, leads the Management Team. The Management Team consists of the heads of the departments. AAP consists of a number of departments. These are, among others, Rescue & Rehabilitation, Prevention and Fundraising & Sponsoring



4. DEPARTMENTS AND VOLUNTEERING

This section shows a brief description of what the main activities are per department and which possibilities there are for volunteering. Only the departments for which volunteering is possible are included in this section.

4.1 ANIMAL CARE – AAP ALMERE

The Animal Care department in Almere is divided into four different departments: Quarantine, Mammals, Primates and the Chimpanzee Complex. Every department has an international character, with employees, interns and volunteers, in which you can play an important role. There are some key differences between the activities of these departments.

1. **Quarantine:** This is the home of the newly-arrived animals. At Quarantine it is necessary to work with strict hygiene protocols and often under physically demanding working conditions. As a volunteer you will mostly work independently.
2. **Mammal Department:** this is where the care of, small mammals like racoons, skunks, coatis and degus take place. Also the smaller monkey species, like marmosets and lemurs are housed on this department. The mammal department has slightly lighter physical activities compared to the other departments and offers a great deal of variety (with many different species).
3. **Primate Department:** the middle to large primates are situated here (apes excluded). At the Primate Department you will work with different kinds of primates and you will see the rehabilitation of these animals up close. It is most likely that this is the department that you'll start your voluntary work as it is our largest department.
4. **Chimpanzee Department:** this is the place where all our chimpanzees are housed. The Chimpanzee Department knows two separate sub departments; resocialization and special care for a variety of reasons, volunteers only work on the Resocialization Department.

4.1.1 ACTIVITIES

You as a volunteer will help with the daily cleaning of the enclosures and the preparation of the food in our Central Kitchen. There are also additional activities such as making enrichments for the animals. After a training period you will also help with feeding the animals and distributing the enrichments. This of course depends on your progress, the amount of time you spend at AAP and may differ per department. 70% of your time at animal care you will be occupied in doing the cleaning. This is physically demanding and monotonous work. When working at animal care AAP expects you to take your own responsibility. If, for example, you have regular physical complaints, like backaches or arthralgia, you are advised not to work in animal care.

4.1.2 AVAILABILITY

All animal care departments have set working hours because all staff members are dependent upon each another. Work also continues in weekends and holidays. For continuity and gaining experience it is necessary to work a minimum of one day per week. During the summer months it is also possible to work two full weeks in total.

4.2 ANIMAL CARE – AAP PRIMADOMUS

AAP's work does not stop at the rescue centre in Almere. We are active throughout Europe. Primadomus is the rescue centre of AAP in Spain. Here, on 444 acres and with the help of our employees and volunteers, we offer housing for primates and big cats. In Primadomus the Animal Care Department is also divided in four separate departments:

- 1. Quarantine:** This is the home of the newly-arrived animals at Primadomus. At Quarantine it is necessary to work with strict hygiene protocols and often under physically demanding working conditions. As a volunteer you will mostly work independently.
- 2. Modulo A+B:** Both buildings house stable groups of primates and chimpanzees. These animals are ready to be outplaced.
- 3. Modulo C:** This is the department where the social rehabilitation process for the Barbary macaque takes place. These social introductions to build stable groups for outplacement is the key function of this department.
- 4. Big Cats:** The Big Cat Department consists of tree buildings that houses rescued lions, tigers, leopards and other big cats. Due to the large size of the outside enclosures and the big amount of meat preparation it is important to have a good physical condition.

4.2.1 ACTIVITIES

Volunteers in the animal care at Primadomus help in caring for the animals. In the daily routine you help with cleaning, preparing and distributing food, making and distributing enrichments and carrying out observations. Minor maintenance and repair are also among the activities. As a volunteer at Primadomus it is expected that you are able to work independently as well as in a team. Because the team is relatively small you will frequently work independently. The main language is English so you are expected to have sufficient knowledge of the English language. Keep in mind that the work is equally physically demanding.

4.2.2 AVAILABILITY

To become a volunteer at Primadomus you must be available for 40 hours per week for a period of several continuous months. In addition, you are expected to work at weekends and preferably to be in possession of a drivers licence.

5. ADDITIONAL INFORMATION & APPLICATION

For further information concerning your voluntary work at AAP, please read the following information.

5.1 VOLUNTEERING ON OTHER DEPARTMENTS

Most of our foreign volunteers work in animal care and this is the department that is always looking for help. When other departments are looking for volunteers we place a vacancy on our website. You can find a link to our current vacancies in section 5.4.

5.2 EVS – EUROPEAN VOLUNTARY SERVICE

An alternative way to volunteer at AAP is through the EVS program, a subsidy program by the European Union. You can read all about it on our website by following [this link](#).

5.3 ACCOMMODATION AND TRAVEL EXPENSES

AAP Almere reserves it's accommodations for volunteers of the EVS program only and expects all other volunteers to arrange their own accommodation. AAP covers all work related travel expenses when travelling with public transportation and covers 19 cents per kilometre up to a maximum of 100 kilometre when travelling by car. AAP also provides a bicycle for volunteers that prefer cycling over public transportation.

For volunteers in AAP Primadomus however we are able to provide accommodation in one of our apartments and bikes are available during your stay.

5.4 PUBLIC TRANSPORTATION

Experience has shown that travelling to AAP Almere by public transport is reasonable from Monday to Friday, but at weekends it is rather difficult and costs a lot of time because AAP is situated just outside Almere. It is important to check the best way to AAP for you (for example via: www.9292.nl).

Because there is no public transportation to AAP Primadomus, volunteers are picked up in the morning and brought back to the apartment at the end of the working day by shuttle bus.

5.5 APPLICATION

Are you interested in volunteering at one of the departments of AAP? you can apply by filling out the form on our website:

- ▶ To the application form for volunteering: [click here -](#)
- ▶ For vacancies for volunteering: [click here -](#)

6. CONTACT

AAP - Almere: Kempphaanpad 1, 1358 AC Almere, The Netherlands (Office and Reception).

AAP - Primadomus: Finca Rincón del Moro, Apartado de Correos 90, 03400 Villena (Alicante), Spain

If you have further questions, please contact:

coordinator volunteers & interns

vrijwilligerswerk@aap.nl

AAP
P.O. box 50313
1305 AH Almere